

# ERIS

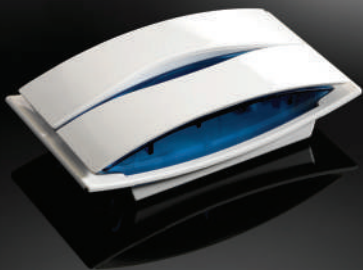
## Redefining indoor sirens

The ERIS series is an innovative combination of high aesthetics with the certified security of Sigma Security. Its modern design and advanced technical features redefine indoor sirens so far. It is an innovative product of Sigma Security which guarantees maximum security in the user's protected area, offering a complete service in the field of Security Systems. It was designed by a team of Greek engineers and is produced entirely in Greece. Like all Sigma the Security products, it is covered by a warranty of up to 2 years.





ERIS  
ERIS PLUS  
ERIS FIRE



### 3 DIFFERENT OPERATIONS OF ERIS PLUS



When you are in the protected area (STAY arming ) and there is an alarm, Eris will sound at low level (85 db) and the flash will turn on continuously



When you are away (AWAY arming) and there is an alarm, Eris will sound at Hi level (105 db) and the LEDs will flashing



In case of power loss and while user is in the protected area Eris will operate as a Night Light (flash will turn on continuously)

Technical Specifications	ERIS	ERIS PLUS	ERIS FIRE
Power Supply	12 - 15 V DC		24-27 V DC
Consumption (Stand By)	-	6 mA	-
Consumption (Max)	120 mA	240 mA	100 mA
Acoustic Power (at 1 m)	105dB	85dB or 105dB	85dB
Operation Frequency	1600 to 3300 Hz		600 / 900Hz
Activation	with 12V DC	Applying positive voltage on inputs	with 12 V DC
TAMPER contact	-	NC / 1A - 125 V DC	-
Protection Rate	IP 30		
Operation Temperature	-10°C to +50°C		
Dimensions	1141mm (W) X 78mm (H) X 39mm (D)		
Weight	130 gr		
Color	White	White or White/Blue or White/Red	Red



MADE IN  
GREECE

