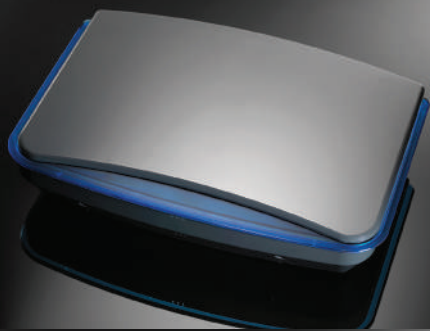


IRIS

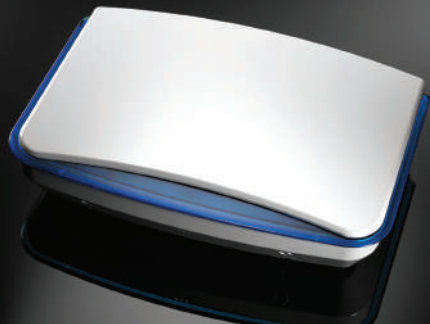
Safety and aesthetics in a unique combination.

The IRIS series is a unique combination of high aesthetics and advanced technology, designed with the strictest safety standards. It is the first siren in the world that is easily programmed using only two buttons. Iris Siren owns the highest degree of certification and also meets the strictest security specifications (Grade 3, Grade 4). It is a unique product of Sigma Security which guarantees top security in the protected area of the user, while offering an integrated service in the field of Security Systems. IRIS was designed by a team of Greek engineers and is produced entirely in Greece. It is covered by a 2-year performance guarantee like all the Sigma Security products.





IRIS LITE
IRIS BASIC
IRIS PLUS
IRIS FSD



Technical Specifications	IRIS	IRIS FSD
Power Supply	13.2-14.5 V DC	
Operational Voltage	13.8 V DC	
Consumption (Standby)	8 mA (when initially is powered by the battery and not by the control panel)	
	13.0mA when the LEDs turn on at standby	
Consumption (Alarm)	1.2A max only sound, 1.35A max when the FLASH turns on	
Low Battery Output	When the battery voltage is lower than 11.5 V DC	
Activation from Trigger +	It is balanced when there are +12VDC on the Trigger + input. It sounds an alarm if this voltage is interrupted or if the voltage on this input drops below 5.8 V DC	
Activation from Trigger-	It is balanced when there are 0VDC on the Trigger - input. It sounds an alarm if the (-) voltage of power supply is interrupted or if the voltage on this input voltage is higher than 1.5 V DC	
Acoustic Power	122dB at 1 meter	
Maximum Alarm Duration	15 minutes	
TAMPER Protection	On the cover and on the wall	
Protection Rate	IP 44	
Temperature	-25°C to +55°C	
Battery (Pb)	12 V /1.3 ñ 2.3 Ah	
Siren housing and Flash material	Polycarbonate	
Weight (without battery)	1880gr	
Dimensions	348 x 245 x 78 mm	

 MADE IN GREECE

